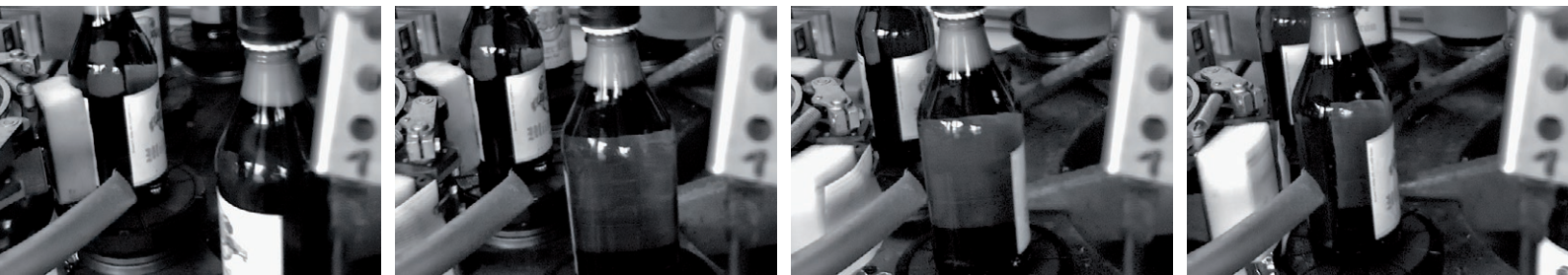


PROMON SCOPE G2 – a Portable High Speed Streaming System



The high-speed camera system PROMON SCOPE G2 sets new standards for portable high-speed recording devices. Thanks to an intuitive touchscreen interface, a weight of only 2.5 kg (5.5lbs), as well as a battery-supported autonomy time of more than two hours, the compact and portable system is ready for immediate use on the factory floor – due to its solid construction also in challenging environments. PROMON SCOPE G2 supports users in troubleshooting, servicing assembly lines, preventive maintenance tasks, and in fine-tuning and optimization of production processes.

With a recording rate of up to 3000 images per second, the high-speed camera system PROMON SCOPE G2 allows detailed insight in slow motion into the fastest production processes. PROMON SCOPE G2 is the ideal tool to record sporadic errors for in-depth analysis. The high resolution images reveal even the smallest details and allow fundamental understanding of the recorded process. Understanding a process in detail under real world conditions is a key factor for its optimization and for maximizing output.

In addition to the image data, external analog signals such as voltages, pressure, switch states, or PLC-signals can be recorded picture-synchronous, and displayed as video overlays. Additional features are a trigger input for start / stop of the recording and a touch screen. Setting up this camera and playing back sequences is just a fingertip away.

Special features

- **Ready to use in an instant** – No time consuming installations, setups or configurations necessary. Autonomous operation thanks to built-in battery.
- **External signals** – Recording of external analog and digital signals; retains system conditions during the recording
- **Efficient** – Rapid detection of errors and optimization potential
- **Intuitive operation** – Progressive, intuitive operating concept; minimal training periods
- **Robust construction** – Shock absorbing aluminum-magnesium-casing for use in tough environmental conditions

PROMON SCOPE G2 – Key Specifications

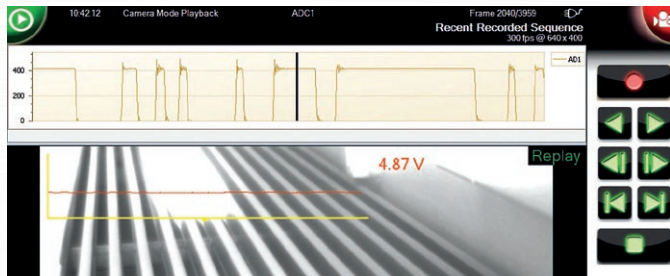
Frame rate vs resolution vs recording time

fps	Resolution Setting 1 (square)	Resolution Setting 2 (rectangular)
30	2048 x 1088	2048 x 1088
50	2048 x 1088	2048 x 1088
80	2048 x 1088	2048 x 1088
90	1280 x 1024	1280 x 1024
100	1280 x 800	1280 x 900
200	1024 x 800	1024 x 800
250	1024 x 720	1024 x 720
300	800 x 608	1024 x 608
375	640 x 480	1024 x 480
500	544 x 352	1024 x 352
560	480 x 640	640 x 480 *
700	544 x 240	1024 x 240
1000	480 x 352	480 x 352
1400	320 x 240	480 x 240
2000	320 x 160	480 x 160
2500	320 x 128	480 x 128
3000	320 x 96	480 x 96

* Camera must be rotated by 90 degrees
 – 40 minutes recording time with the above mentioned settings (at maximum frame rate)
 – Optional: 80 minutes recording time

Camera/Sensor specifications

Camera Model		PROMON 501 color	PROMON 501 monochrome	PROMON 501 near infrared
Sensitivity		ISO 2400	ISO 3600	5.56 V/lux-sec
Casing	Compact, robust aluminum case			
Sensor	2/3" CMOS (12.76 mm diagonal) / pixel size 5.5 µm			
Optical Mount	C-Mount / CS-Mount			
Port	Robust all-in-one plug			
Size/Weight	54 x 54 x 65 mm / 332 gr (0.8 lb)			
Operating Temperature	0 ... +45 °C / +32 ... +113 °F			
Storage Temperature	-40 ... +70 °C / -40 ... +158 °F			
Mounting Options	M4 threads on all sides UNC 1/4" bottom and on the side for tripod mount			
CE	In accordance with common standards			



Picture synchronous recording of external signals (such as voltage)

Control unit specifications

Control Unit	Compact, fanless housing
Display	10" TFT display with touchscreen
Battery	11.1 V / 57.72 Watts Rechargeable, exchangeable lithium-ion battery for more than 2 hours of autonomy / battery extension available
Trigger Functions	Ringbuffer recording, Pre-/post trigger recording
Trigger	Closing / opening contact or manual
Motion Detection	Movement as trigger release or as an event marker
Analogue / Digital Input	2 A/D-channels for picture synchronous recording of analogue signals / 0-5 V / 0-24 V / A/D-resolution 10 Bit / sampling frequency corresponds to respective frame rate
Memory	Standard memory: 250 GB SSD Disk (approx. 40 minutes recording time) Optional: 500 GB (approx. 80 minutes recording time)
Dimensions / Weight	266 x 220 x 50.5 mm / 2.5 kg (5.5 lbs)
Operating Temp.	0 ... +45 °C / +32 ... +113 °F
Storage Temp.	-40 ... +70 °C / -40 ... +158 °F
CE	CE, FCC class B

Interfaces

I/O-Plug	Connection of the AD-signals und Strobe-signals for the control of an external lighting system
Trigger In	BNC connector +24 V max
Data Export	Via USB 3.0 hard disk or SD-Card
Editing Software	Range of functions: – Playback of a sequence – Cutting and editing – Storing as AVI-files Optional: Motion analysis software
Requirements PC System	Win 7/8 – 32 Bit/64 Bit Graphic card with Full-HD resolution (1920 x 1080)

Scope of delivery

	Battery-powered control unit PROMON 501 camera (camera type defined with order) PC-software with manual and documentation on CD Power supply 110–240 VAC / 19 V / 60 W Cable for camera connection 3.5 m (11 ft) / other lengths on request Desk stand Protection bag
Optional	– Docking station – Memory expansion (80 min.) – Replacement battery – Additional battery for 3 hours of operation – Transport case – Optics, lighting and supporting arm – Motion analysis software – Streaming packet for operating the camera on a PC system – I/O-adaptor cable with BNC plugs



Dedicated control buttons for quick access to menu, exposure time, and user-specific camera settings.

Your local AOS partner:

